

TUNICA STREET INDEX
 1ST SOUTH ST. E. S3
 1ST EAST AVE. S. S3, C3
 1ST NORTH ST. E. S3
 2ND EAST AVE. N. S3
 2ND NORTH ST. E. S3
 3RD EAST AVE. N. S3
 3RD NORTH ST. E. S3
 4TH EAST AVE. N. S3
 4TH NORTH ST. E. S3
 5TH EAST AVE. N. S3
 5TH NORTH ST. E. S3
 6TH EAST AVE. N. S3
 6TH NORTH ST. E. S3
 7TH EAST AVE. N. S3
 7TH NORTH ST. E. S3
 8TH EAST AVE. N. S3
 8TH NORTH ST. E. S3
 9TH EAST AVE. N. S3
 9TH NORTH ST. E. S3
 10TH EAST AVE. N. S3
 10TH NORTH ST. E. S3
 11TH EAST AVE. N. S3
 11TH NORTH ST. E. S3
 12TH EAST AVE. N. S3
 12TH NORTH ST. E. S3
 13TH EAST AVE. N. S3
 13TH NORTH ST. E. S3
 14TH EAST AVE. N. S3
 14TH NORTH ST. E. S3
 15TH EAST AVE. N. S3
 15TH NORTH ST. E. S3
 16TH EAST AVE. N. S3
 16TH NORTH ST. E. S3
 17TH EAST AVE. N. S3
 17TH NORTH ST. E. S3
 18TH EAST AVE. N. S3
 18TH NORTH ST. E. S3
 19TH EAST AVE. N. S3
 19TH NORTH ST. E. S3
 20TH EAST AVE. N. S3
 20TH NORTH ST. E. S3
 21ST EAST AVE. N. S3
 21ST NORTH ST. E. S3
 22ND EAST AVE. N. S3
 22ND NORTH ST. E. S3
 23RD EAST AVE. N. S3
 23RD NORTH ST. E. S3
 24TH EAST AVE. N. S3
 24TH NORTH ST. E. S3
 25TH EAST AVE. N. S3
 25TH NORTH ST. E. S3
 26TH EAST AVE. N. S3
 26TH NORTH ST. E. S3
 27TH EAST AVE. N. S3
 27TH NORTH ST. E. S3
 28TH EAST AVE. N. S3
 28TH NORTH ST. E. S3
 29TH EAST AVE. N. S3
 29TH NORTH ST. E. S3
 30TH EAST AVE. N. S3
 30TH NORTH ST. E. S3
 31ST EAST AVE. N. S3
 31ST NORTH ST. E. S3
 32ND EAST AVE. N. S3
 32ND NORTH ST. E. S3
 33RD EAST AVE. N. S3
 33RD NORTH ST. E. S3
 34TH EAST AVE. N. S3
 34TH NORTH ST. E. S3
 35TH EAST AVE. N. S3
 35TH NORTH ST. E. S3
 36TH EAST AVE. N. S3
 36TH NORTH ST. E. S3
 37TH EAST AVE. N. S3
 37TH NORTH ST. E. S3
 38TH EAST AVE. N. S3
 38TH NORTH ST. E. S3
 39TH EAST AVE. N. S3
 39TH NORTH ST. E. S3
 40TH EAST AVE. N. S3
 40TH NORTH ST. E. S3
 41ST EAST AVE. N. S3
 41ST NORTH ST. E. S3
 42ND EAST AVE. N. S3
 42ND NORTH ST. E. S3
 43RD EAST AVE. N. S3
 43RD NORTH ST. E. S3
 44TH EAST AVE. N. S3
 44TH NORTH ST. E. S3
 45TH EAST AVE. N. S3
 45TH NORTH ST. E. S3
 46TH EAST AVE. N. S3
 46TH NORTH ST. E. S3
 47TH EAST AVE. N. S3
 47TH NORTH ST. E. S3
 48TH EAST AVE. N. S3
 48TH NORTH ST. E. S3
 49TH EAST AVE. N. S3
 49TH NORTH ST. E. S3
 50TH EAST AVE. N. S3
 50TH NORTH ST. E. S3
 51ST EAST AVE. N. S3
 51ST NORTH ST. E. S3
 52ND EAST AVE. N. S3
 52ND NORTH ST. E. S3
 53RD EAST AVE. N. S3
 53RD NORTH ST. E. S3
 54TH EAST AVE. N. S3
 54TH NORTH ST. E. S3
 55TH EAST AVE. N. S3
 55TH NORTH ST. E. S3
 56TH EAST AVE. N. S3
 56TH NORTH ST. E. S3
 57TH EAST AVE. N. S3
 57TH NORTH ST. E. S3
 58TH EAST AVE. N. S3
 58TH NORTH ST. E. S3
 59TH EAST AVE. N. S3
 59TH NORTH ST. E. S3
 60TH EAST AVE. N. S3
 60TH NORTH ST. E. S3
 61ST EAST AVE. N. S3
 61ST NORTH ST. E. S3
 62ND EAST AVE. N. S3
 62ND NORTH ST. E. S3
 63RD EAST AVE. N. S3
 63RD NORTH ST. E. S3
 64TH EAST AVE. N. S3
 64TH NORTH ST. E. S3
 65TH EAST AVE. N. S3
 65TH NORTH ST. E. S3
 66TH EAST AVE. N. S3
 66TH NORTH ST. E. S3
 67TH EAST AVE. N. S3
 67TH NORTH ST. E. S3
 68TH EAST AVE. N. S3
 68TH NORTH ST. E. S3
 69TH EAST AVE. N. S3
 69TH NORTH ST. E. S3
 70TH EAST AVE. N. S3
 70TH NORTH ST. E. S3
 71ST EAST AVE. N. S3
 71ST NORTH ST. E. S3
 72ND EAST AVE. N. S3
 72ND NORTH ST. E. S3
 73RD EAST AVE. N. S3
 73RD NORTH ST. E. S3
 74TH EAST AVE. N. S3
 74TH NORTH ST. E. S3
 75TH EAST AVE. N. S3
 75TH NORTH ST. E. S3
 76TH EAST AVE. N. S3
 76TH NORTH ST. E. S3
 77TH EAST AVE. N. S3
 77TH NORTH ST. E. S3
 78TH EAST AVE. N. S3
 78TH NORTH ST. E. S3
 79TH EAST AVE. N. S3
 79TH NORTH ST. E. S3
 80TH EAST AVE. N. S3
 80TH NORTH ST. E. S3
 81ST EAST AVE. N. S3
 81ST NORTH ST. E. S3
 82ND EAST AVE. N. S3
 82ND NORTH ST. E. S3
 83RD EAST AVE. N. S3
 83RD NORTH ST. E. S3
 84TH EAST AVE. N. S3
 84TH NORTH ST. E. S3
 85TH EAST AVE. N. S3
 85TH NORTH ST. E. S3
 86TH EAST AVE. N. S3
 86TH NORTH ST. E. S3
 87TH EAST AVE. N. S3
 87TH NORTH ST. E. S3
 88TH EAST AVE. N. S3
 88TH NORTH ST. E. S3
 89TH EAST AVE. N. S3
 89TH NORTH ST. E. S3
 90TH EAST AVE. N. S3
 90TH NORTH ST. E. S3
 91ST EAST AVE. N. S3
 91ST NORTH ST. E. S3
 92ND EAST AVE. N. S3
 92ND NORTH ST. E. S3
 93RD EAST AVE. N. S3
 93RD NORTH ST. E. S3
 94TH EAST AVE. N. S3
 94TH NORTH ST. E. S3
 95TH EAST AVE. N. S3
 95TH NORTH ST. E. S3
 96TH EAST AVE. N. S3
 96TH NORTH ST. E. S3
 97TH EAST AVE. N. S3
 97TH NORTH ST. E. S3
 98TH EAST AVE. N. S3
 98TH NORTH ST. E. S3
 99TH EAST AVE. N. S3
 99TH NORTH ST. E. S3
 100TH EAST AVE. N. S3
 100TH NORTH ST. E. S3

LEGEND

ROADS AND ROADWAY FEATURES

- UNIMPROVED ROAD
- PAVED ROAD
- UNIMPROVED HIGHWAY
- DIVIDED HIGHWAY
- INTERSTATE SYSTEM
- CITY STREETS

HIGHWAY BRIDGES

- BRIDGE 90 FEET AND OVER
- DRAWBRIDGE
- FERRY (FREE OR TOLL)
- HIGHWAY GRADE SEPARATION
- HIGHWAY INTERCHANGE

ROAD SYSTEM DESIGNATION

- INTERSTATE NUMBERED
- U.S. NUMBERED
- STATE NUMBERED

RAILROADS

- RAILROAD STATION
- GRADE CROSSING
- RAILROAD ABOVE
- RAILROAD BELOW

AIRPORTS

- MILITARY AIRPORT
- AIRPORT LIMITED FACILITIES
- LANDING AREA OR STRIP (INCLUDING PRIVATE AIR FIELDS)
- AIRPORT, COMPLETE FACILITIES
- AIRWAY LIGHT BEACON

DRAINAGE AND NATURAL FEATURES

- NARROW STREAM
- DRAINAGE DITCH
- LAKES AND RESERVOIRS
- OVERFLOW LAND
- MARSH OR SWAMP LAND

BOUNDARIES

- STATE BOUNDARY
- COUNTY BOUNDARY
- TRAT LINE
- CONGRESSIONAL TOWNSHIP
- SECTION LINE
- NATIONAL OR STATE FOREST
- URBAN AREA COMPACT
- INCORPORATED PLACES
- UNINCORPORATED DELIMITED AREAS

CONSERVATION AND RECREATION

- MOTEL OR HOTEL
- CAMP OR LODGE
- HISTORIC OR SCENIC SITE
- FAIR GROUNDS OR RACE COURSE
- SMALL PARK
- GOLF COURSE OR COUNTRY CLUB

INDUSTRIAL

- FACTORY OR INDUSTRY
- SEASONAL INDUSTRY

CHURCHES AND CEMETERIES

- CHURCH
- CEMETERY
- CHURCH WITH CEMETERY ADJACENT

EDUCATION

- SCHOOL

MISCELLANEOUS STRUCTURES

- ARMORY
- FORT, ARMY CAMP

NAVIGATION

- DOCK, PIER OR LANDING
- LEVEL OR DIKE
- LEVEL OR DIKE WITH ROAD

CITY AND VILLAGE CENTERS

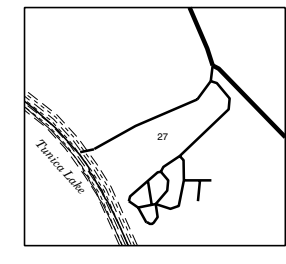
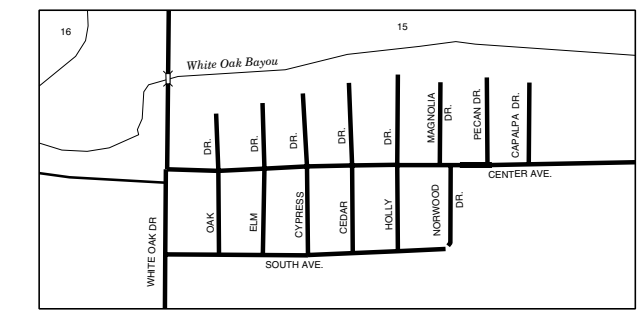
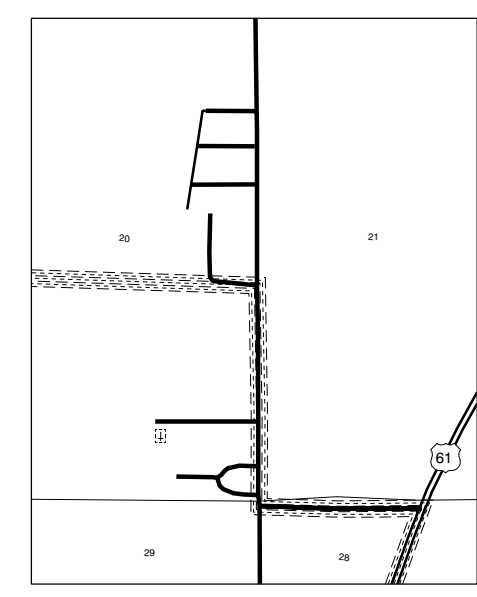
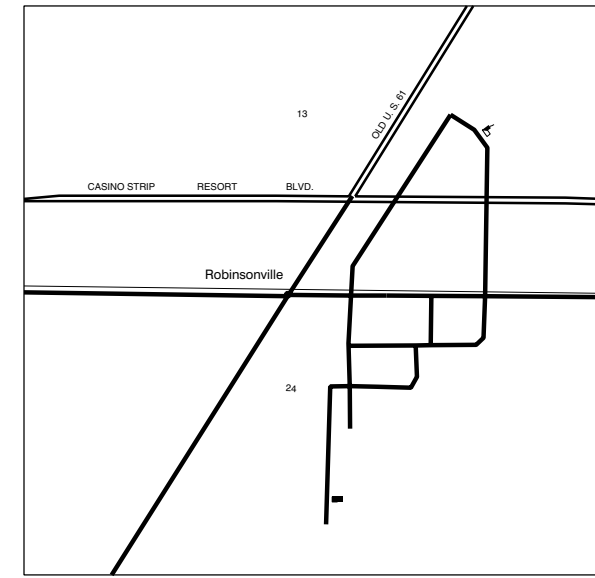
- COUNTY SEAT
- OTHER CITIES AND VILLAGES

MISCELLANEOUS

- TRANSLATION STATION
- BENCH MARK WITH ELEVATION

PUBLIC SERVICE FACILITIES

- OBSERVATION OR LOOKOUT TOWER
- HIGHWAY GARAGE
- POST OFFICE
- POWER PLANT
- WEIGHT STATION
- HOSPITAL
- SEWAGE DISPOSAL PLANT
- COMMUNITY CENTERS OR TOWNHALL
- NATIONAL PARK GARAGE
- FIRE STATION
- PUBLIC LIBRARY
- SANITARY LAND FILL
- CORRECTIONAL INSTITUTION
- POLICE STATION
- GRAVEL PIT
- REST AREA



SCALE IN KILOMETERS
 SCALE FOR ENLARGEMENTS IN MILES

SCALE IN KILOMETERS
 SCALE FOR ENLARGEMENTS IN MILES

GENERAL HIGHWAY MAP
TUNICA COUNTY
 MISSISSIPPI
 © 2007
 REVISED: 04/2009
 MISSISSIPPI DEPARTMENT OF TRANSPORTATION
 PLANNING DIVISION
 IN COOPERATION WITH THE
 U.S. DEPARTMENT OF TRANSPORTATION
 FEDERAL HIGHWAY ADMINISTRATION
 TRANSVERSE MERCATOR PROJECTION,
 STATE PLANE COORDINATE SYSTEM 1983

DATA SOURCES

2006 ASCS AERIAL PHOTOS
1987 USGS DLG
1980 MDT FIELD INVENTORY
2000 POPULATION 9,227
2002 BELT LINES

SCALE IN KILOMETERS
 SCALE IN MILES

MISSISSIPPI DEPARTMENT OF TRANSPORTATION
 COPYRIGHT LICENSE AGREEMENT
 With the purchase of this map, the Mississippi Department of Transportation grants you the right to use the copyrighted map as set forth below.
 The map is owned by the Mississippi Department of Transportation and is protected by the United States copyright laws and international provisions. You are required to treat the map like any other copyrighted material except that you may copy the map in whole or in part without modification, provided the notice of copyright by the Mississippi Department of Transportation is displayed in a prominent location on each copy.
 You have a copyright-free right to reproduce and distribute the copyrighted map in whole or in part, without modification, provided the Mississippi Department of Transportation copyright notice is displayed in a prominent location on each reproduction.
 Any modification of a map made in violation of this agreement and without your license to use, copy, and distribute the map. Use of modified maps is strictly prohibited and is subject to prosecution under State and Federal laws.
 This agreement is governed by the Laws of the State of Mississippi, U.S. Federal Laws and U.S. International Treaties.
 Should you have any questions concerning this agreement, please write: Mississippi Department of Transportation Planning Division, Post Office Box 1800, Jackson, Mississippi 39219-1800.